



Corporation of the Municipality of Thames Centre

4305 Hamilton Road, Dorchester, Ontario N0L 1G3 – Phone 519-268-7334 – Fax 519-268-3928 – [www.thamescentre.on.ca](http://www.thamescentre.on.ca) – [inquiries@thamescentre.on.ca](mailto:inquiries@thamescentre.on.ca)

**Municipality of Thames Centre**  
**NOTICE OF UPCOMING CONSTRUCTION**  
**King Street Storm Sewer Upgrade and Road Urbanization**

June 22, 2026

Dear Property Owner / Resident,

The Municipality of Thames Centre (Municipality) hereby notifies and advises all residents and affected parties of the upcoming construction project along King Street from Nissouri Road to Wye Creek Bridge. Starting **early July 2026**, Blue-Con Construction will lead the effort, with an anticipated completion date of **November 2026**. A full-time inspector from WT Infrastructure Solutions Ltd., supported by periodic visits from our municipal staff, will oversee the project to ensure everything runs as smoothly as possible. We're committed to keeping you informed and minimizing disruptions throughout this process.

**Work Plan Staging**– Please see attached map

**Stage 1:** Brooker Trail to Nissouri Road

- Completion of all storm sewer works
- Curb and gutter, and base asphalt to be complete when Stage 1A is complete
- Boulevard grading and sidewalk work is anticipated to be ongoing throughout all stages of the project
- Hydro One is replacing several hydro poles along this project. Co-ordination efforts are ongoing to encourage Hydro One to complete the pole replacements in Stage 2 while Blue-Con Construction is working in Stage 1.

**Stage 1A:** Nissouri Road and King Street Intersection

- Completion of all storm sewer works
- Curb, gutter and base asphalt will be completed in both Stage 1A and Stage 1 at this time
- This intersection work will be broken down into four quadrants to maintain traffic flow in the intersection

## Stage 2: Brooker Trail to the Wye Creek Bridge

- Completion of all storm sewer works
- Minor Watermain work to be completed overnight to avoid a watermain shutdown during the day
- Completion of all storm sewer works, curb and gutter, and base asphalt
- Boulevard grading and sidewalk work is anticipated to be ongoing throughout all stages of the project
- Hydro One is replacing several hydro poles along this project. Co-ordination efforts are ongoing to encourage Hydro One to complete the pole replacements in Stage 1 while Blue-Con Construction is working in Stage 2

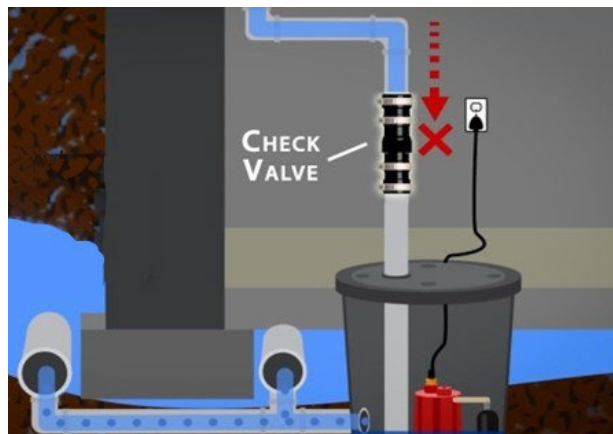
## Stage 3: Final Restoration and Surface Asphalt

- Any remaining boulevard restoration and pedestrian crosswalk poles
- The surface layer of asphalt is being completed from one end of the project to the other at one time
- Line Painting

## Important Notes for Property Owners

### Storm Private Drain Connections (PDC):

- If your existing sump pump or rear yard tile drains into the current storm sewer, it will be connected to the new Storm Private Drain Connection.
- Property owners are responsible for ensuring a working check valve is installed on the pipe between the sump pump and where it exits the basement foundation wall (see diagram below). We encourage you to verify this setup to prevent issues during large rain events.

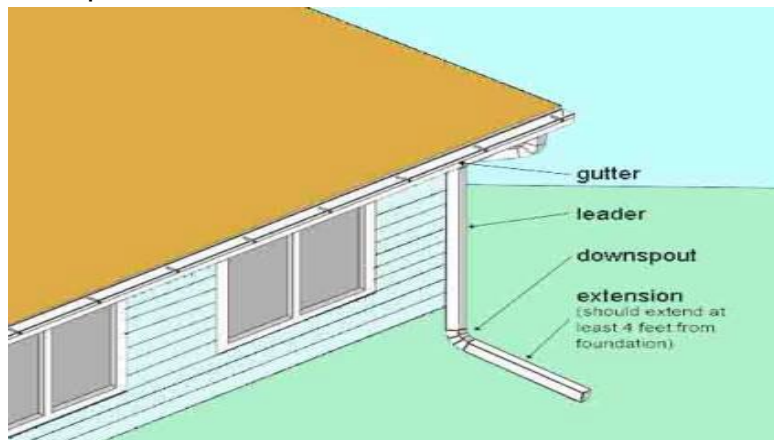


### Private Underground Sprinkler Systems

- If your underground sprinkler system is located within the County Right of Way, please relocate it by **July 15<sup>th</sup>, 2026**, to avoid disruption.
- Note that the Municipality is not liable for any damage to sprinkler systems caused by construction activities.

### Roof Leader (Downspouts)

- If your roof leader (downspout) currently directs water underground into the existing storm sewer, you'll need to disconnect it at the point where it enters the ground near your home. Refer to the diagram below for the recommended downspout setup.



### **Construction Impacts:**

#### Work Hours

Construction will typically occur from **7:00 AM to 7:00 PM, Monday to Friday**. After hours watermain work is scheduled to be completed overnight to avoid a watermain shut down during the day. During working hours, you may notice dust, noise, occasional service interruptions, and other inconveniences.

To protect your belongings, we recommend securing or temporarily storing fragile items like glassware, tea sets, vases, or glass picture frames that could shift or fall from shelves or displays. Due to local soil conditions, construction equipment may cause noticeable vibrations, especially when working directly in front of your home. If you have any concerns, please don't hesitate to contact us.



### Accessibility

If you need accommodations – such as level entry, advance notice, or mobility assistance – please contact the Municipality or WT Infrastructure Solutions Inc. using the phone numbers or emails listed below. You can also speak directly to any construction worker wearing a white hard hat on-site. We'll collaborate with you and the contractor to ensure safe and convenient access throughout the project. We know construction can be challenging for property owners, so please don't hesitate to reach out for help, clarification, or additional information.



### Motorists

Blue-Con Construction will be completing the work in stages to minimize access disruptions and minimize traffic disruptions. School bus companies have been informed and will notify you directly about any changes to pick-up locations.

We'll do our best to maintain driveway access throughout construction. However, there will be brief periods when access is limited – such as during the installation of a new service line, excavation in front of your property, fresh concrete pouring for curbs or sidewalks, or driveway paving. If needed, residents affected by construction can park on nearby streets or in a safe location on one side of the street (ensuring traffic flow is not blocked) outside of construction hours.

Emergency services (EMS, Fire, OPP), school buses, and garbage collection teams will stay updated on changing site conditions to ensure smooth operations.



### Garbage, Recycling, and Oversized Waste Pickup

Please place your blue boxes, garbage containers, and oversized waste at the end of your property as usual. When construction blocks garbage and recycling trucks from reaching your home, Blue-Con Construction will move and return your bins as needed, property owners are encouraged to label their containers prior to construction. If you experience any issues with garbage, recycling, or oversized waste, please contact Kevin Willson at (519) 268-7334 x745 or [kwillson@thamescentre.on.ca](mailto:kwillson@thamescentre.on.ca).



### Nursery Sod

The contractor will water the new sod in the boulevard for 30 days after it's laid. After that, maintenance becomes the property owner's responsibility. We encourage you to join in the watering process to help the sod thrive.



Corporation of the Municipality of Thames Centre

4305 Hamilton Road, Dorchester, Ontario N0L 1G3 – Phone 519-268-7334 – Fax 519-268-3928 – [www.thamescentre.on.ca](http://www.thamescentre.on.ca) – [inquiries@thamescentre.on.ca](mailto:inquiries@thamescentre.on.ca)



### Cyclists and Pedestrians

Cyclists and pedestrians are urged to stay cautious near construction zones.



### Water Service Interruptions

A planned overnight watermain disruption will occur on this project to avoid water disruptions during the day. The Municipality will provide at least 24 hours' notice for any planned interruption by placing door hangers on your front door. If you have concerns about your drinking water, please reach out to Kevin Willson at (519) 268-7334 x745 or [kwillson@thamescentre.on.ca](mailto:kwillson@thamescentre.on.ca). For after-hours water emergencies, call (519) 930-8118.

### Contact Information

The Municipality is dedicated to keeping you informed and supported throughout the construction process. Feel free to contact the Municipality or WT Infrastructure Solutions Inc. anytime with questions or concerns – we're here to assist you. Stay up to date on the Municipal Website: <https://www.thamescentre.on.ca/KingStreetUpgrades26/>

#### Municipality of Thames Centre

Tanner Stanton

(519) 268-7334 Ext. 235

[tstanton@thamescentre.on.ca](mailto:tstanton@thamescentre.on.ca)

#### WT Infrastructure Solutions Inc

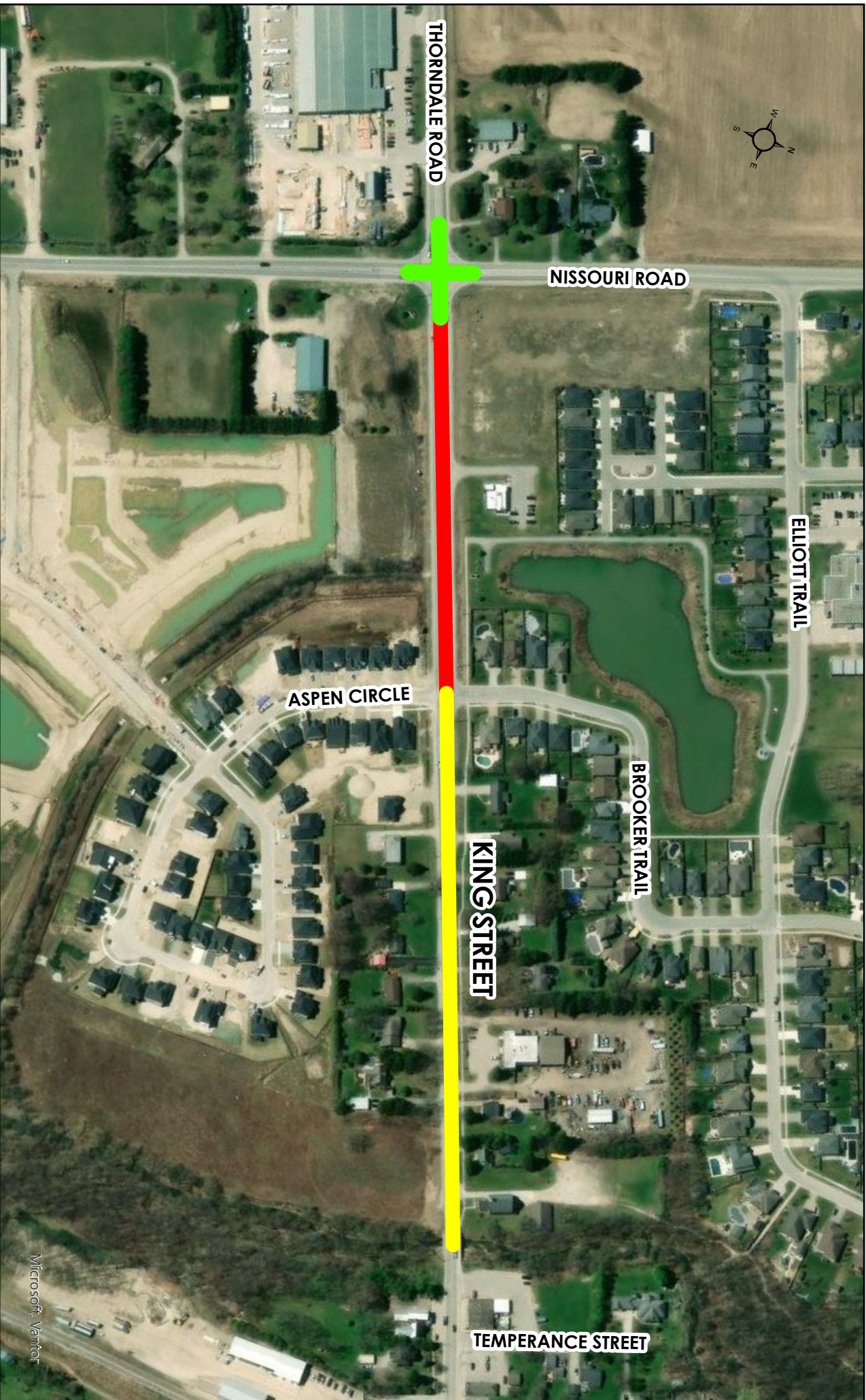
Jon Auckland

(226) 332-0789

[jon.auckland@wtinfrastructure.ca](mailto:jon.auckland@wtinfrastructure.ca)

After Hours Water Emergency Number: (519) 930-8118

# KING STREET CONSTRUCTION - PROJECT STAGING



- STAGE 1
- STAGE 1A
- STAGE 2



Microsoft, Vantor